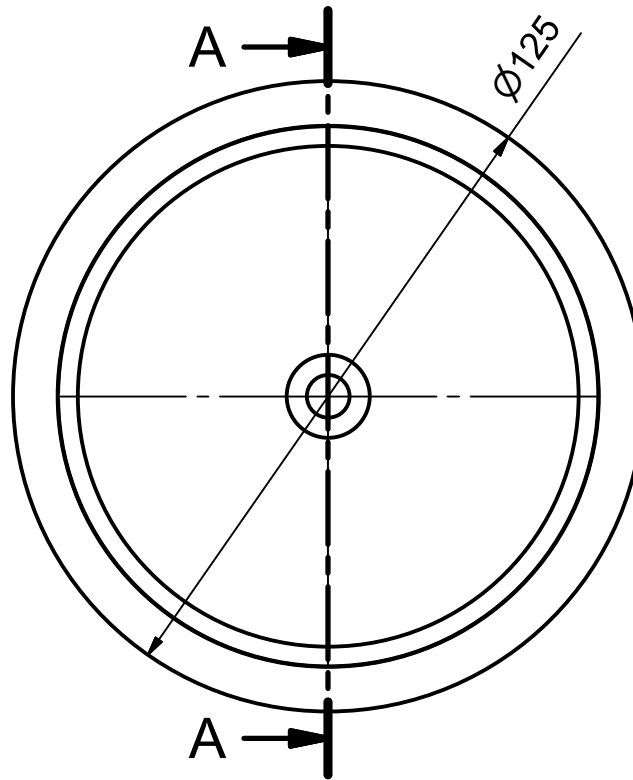
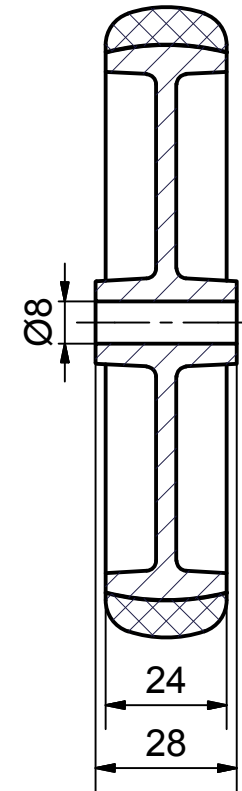





**Load Capacity: 80kg
for speed up to 4km/h
(According to EN 12530)**



SECTION A-A'



 THESSALONIKI - GREECE	PRODUCTION OF INSTITUTIONAL CASTORS AND WHEELS		PERMIS. VARIATIONS:	PART No:	
	This drawing is the property of RODA S.A. It must neither be reproduced in any manner nor shall it be submitted to third parties or competitors without our written consent		SURFACE FINISH :	UNF . DIM.:	
DESIGNED 8/11/2013 E.POLIMEROPOULOU DRAWN 8/11/2013 E.POLIMEROPOULOU CHECKED 12/6/2013 H.SAATSOGLOU			PART NAME : WL-TPA125M.EC		
C3 B2 A1 A/A			PART DESCRIPTION : Wheel 125x24mm,electric conductive non marking grey rubber (82shA),bore diameter 8mm , plain bearing		SHEET No.
QUANTITY REPLACE :			SCALE		DRAWING NUMBER :
			GEN. DWG. NUM. :		