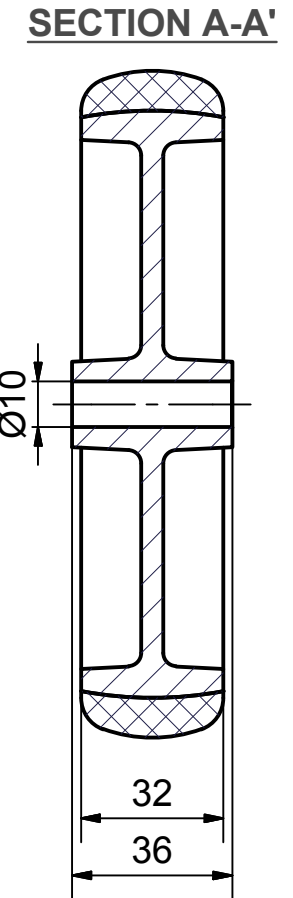
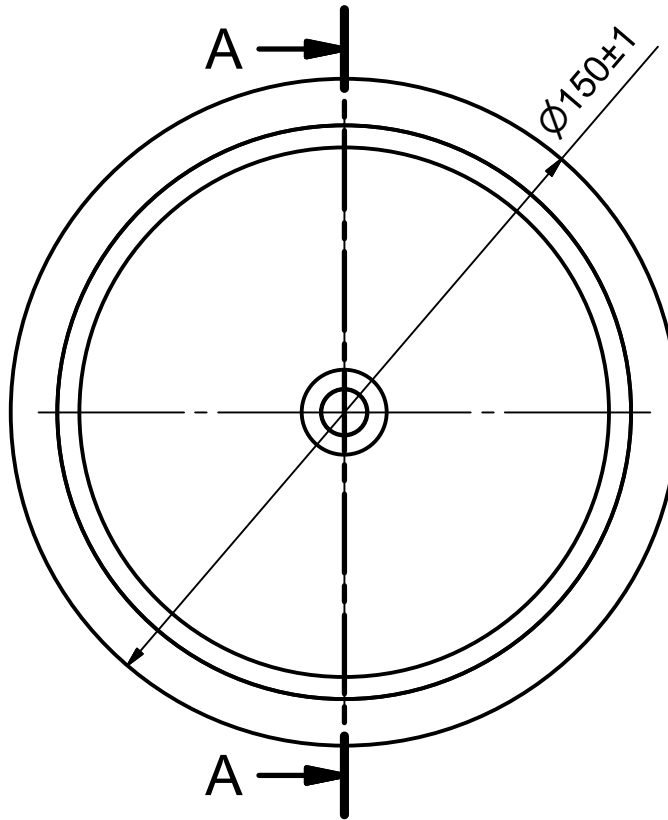





**Load Capacity: 100kg  
for speed up to 4km/h  
(According to EN 12530)**



 <b>THESSALONIKI - GREECE</b>	PRODUCTION OF INSTITUTIONAL CASTORS AND WHEELS		PERMIS. VARIATIONS:	PART No:	
	This drawing is the property of RODA S.A. It must neither be reproduced in any manner nor shall it be submitted to third parties or competitors without our written consent		SURFACE FINISH :	UNF . DIM.:	
DESIGNED 8/11/2013 E.POLIMEROPOULOU DRAWN 8/11/2013 E.POLIMEROPOULOU CHECKED 8/11/2013 H.SAATSOGLOU			PART NAME : <b>WL-TPA150S.EC</b>		
C3 B2 A1 A/A			QUANTITY REPLACE :	PART DESCRIPTION : <b>Wheel 150x32mm,electric conductive non marking grey rubber (82shA),bore diameter 10mm , plain bearing</b>	
			SCALE	DRAWING NUMBER :	SHEET No.
			GEN. DWG. NUM. :		